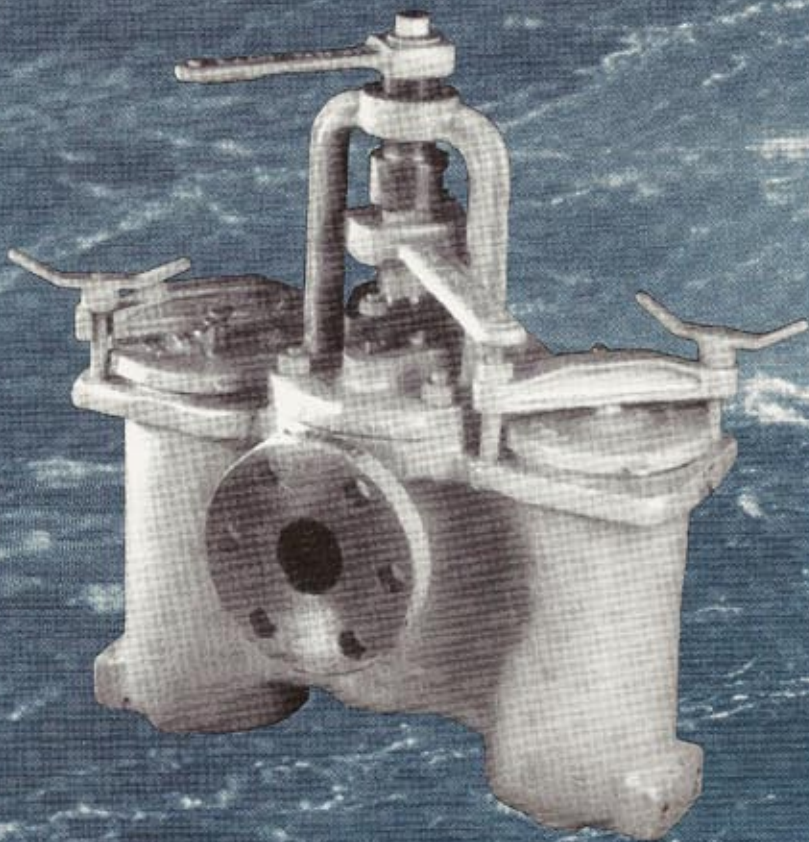


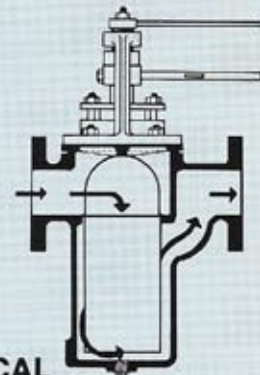
"Serving The Fleet For Over 70 Years"

Tate Andale Model ID Type II Class 2 Duplex Strainer IAW/MIL-S-17849



DESCRIPTION

Each strainer shall be of the duplex basket type with 3-way valve (inlet and outlet valving) and so constructed as to be readily opened for examination, removal and cleaning of the baskets. The design of the 3-way valving shall be so arranged that one basket is fully open and the other is fully shut off at the same time and so designed that no contaminated fluid can pass from one side to the other during changeover except, (the act of shifting flow from one strainer to the other) provided the size particle which passes through the valve clearance does not exceed that retained by the strainer element or basket for the type and class concerned. The arrangement of the strainer shall be such that basket cleaning may be accomplished without interruption, even momentarily, of the full flow through the strainer.



TYPICAL STRAINER SPECIFICATION

This Strainer Is In Full Compliance with MIL-S-17849D

Body, Bonnet, Access Cover and Plug . . . (B61) Bronze, MIL-B-16541

Basket Monel, QQ-N-281 Class A, 3/32" thick (Min.)

Standard Perforation Sizes 1/16", 1/8", 3/16" and 1/4" (other sizes available)

Flanges 150 lb. or 250 lb. IAW/MIL-F-20042

Covers Bolted or Yoked

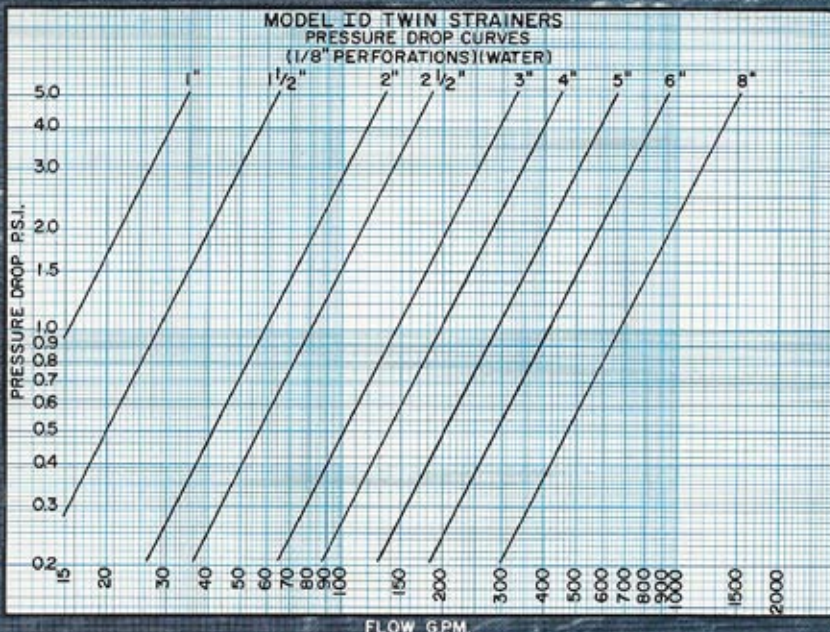
Shock Tested IAW/MIL-S-901C

Vibration Tested MIL-STD-167-1

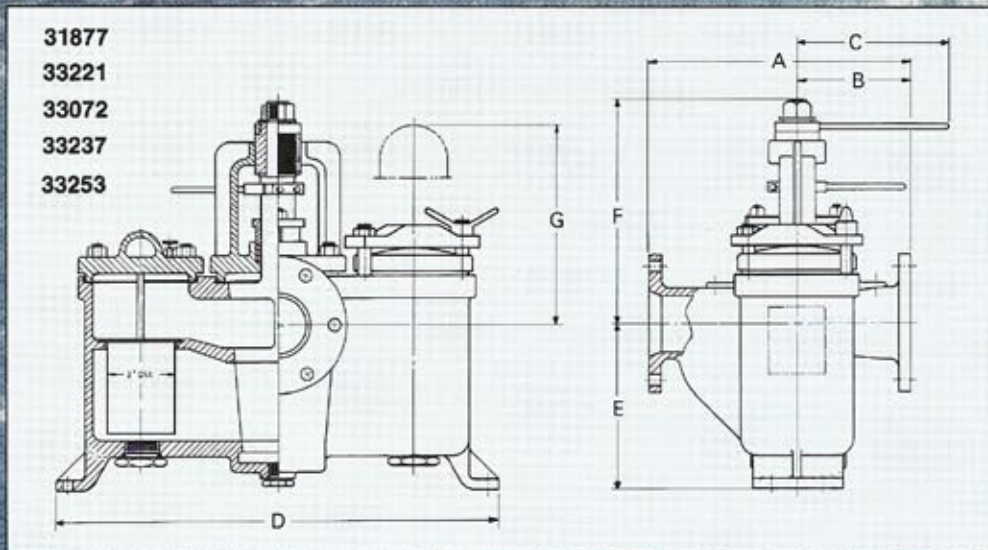
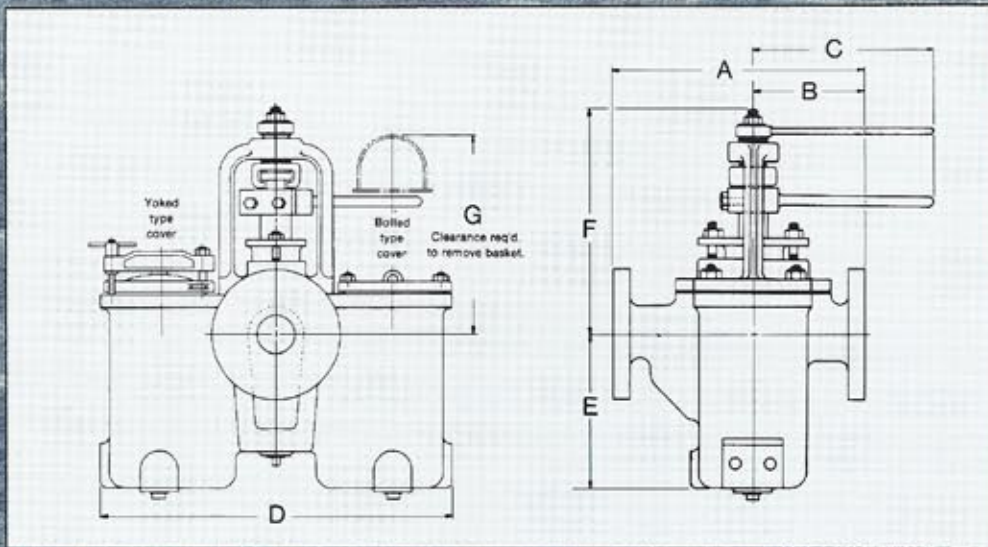
OPTIONAL FEATURES

- Vent and drain valves IAW/BuSHip Dwg. 803-4384536
- Wire cloth basket liners

MOST SIZES AVAILABLE FROM STOCK



NOTE: PRESSURE DROP SHALL NOT EXCEED 6 PSI WHEN NOT SPECIFIED.



Model ID TYPE II Class 2 Dimensions

Drawing Number	32281	31082	32282	30819	31083	31877	33221	30318	33072	33237	32034	33253
SIZE (Inlet Dia.)	¾"	1"	1¼"	1½"	2"	2½"	3"	3½"	4"	5"	6"	8"
A 150#	6%	6%	8%	8%	10 ¹ / ₁₆	11½	13½	14%	16	19¼	20¾	28
A 250#	7%	7¼	9%	9%	10 ¹³ / ₁₆	12%	13½	15%	16%	19¼	22	28
B 150#	2 ¹⁵ / ₁₆	2 ¹⁵ / ₁₆	3 ¹⁵ / ₁₆	3 ¹⁵ / ₁₆	4 ¹³ / ₁₆	5	6 ³ / ₁₆	6 ⁹ / ₁₆	8	8¾	8 ¹³ / ₁₆	12
B 250#	3 ³ / ₁₆	3¼	4 ⁵ / ₁₆	4 ⁵ / ₁₆	5 ³ / ₁₆	5 ⁷ / ₁₆	6 ³ / ₁₆	7 ¹ / ₁₆	8 ⁵ / ₁₆	8¾	9 ⁷ / ₁₆	12
C	4½	4½	7¾	7¾	9¼	7½	7½	11%	8	14	14	14
D	10	10	14	14	17¼	19½	20%	25%	22¾	29½	40	44½
E	4 ⁵ / ₁₆	4 ⁵ / ₁₆	5 ¹³ / ₃₂	5 ¹³ / ₃₂	7 ⁹ / ₁₆	7%	10%	12%	13¼	15%	21½	23%
F	5 ⁵ / ₁₆	5 ⁵ / ₁₆	10 ¹¹ / ₃₂	10 ¹¹ / ₃₂	12 ³ / ₁₆	9¾	10¼	16	11%	14 ¹ / ₁₆	14%	16%
G	6	6	8 ⁵ / ₃₂	8 ⁵ / ₃₂	11½	7%	13¼	18%	17¾	20½	29	34 ¹⁵ / ₁₆
Weight (lbs.)	33	33	78	78	138	145	210	390	325	325	1040	900