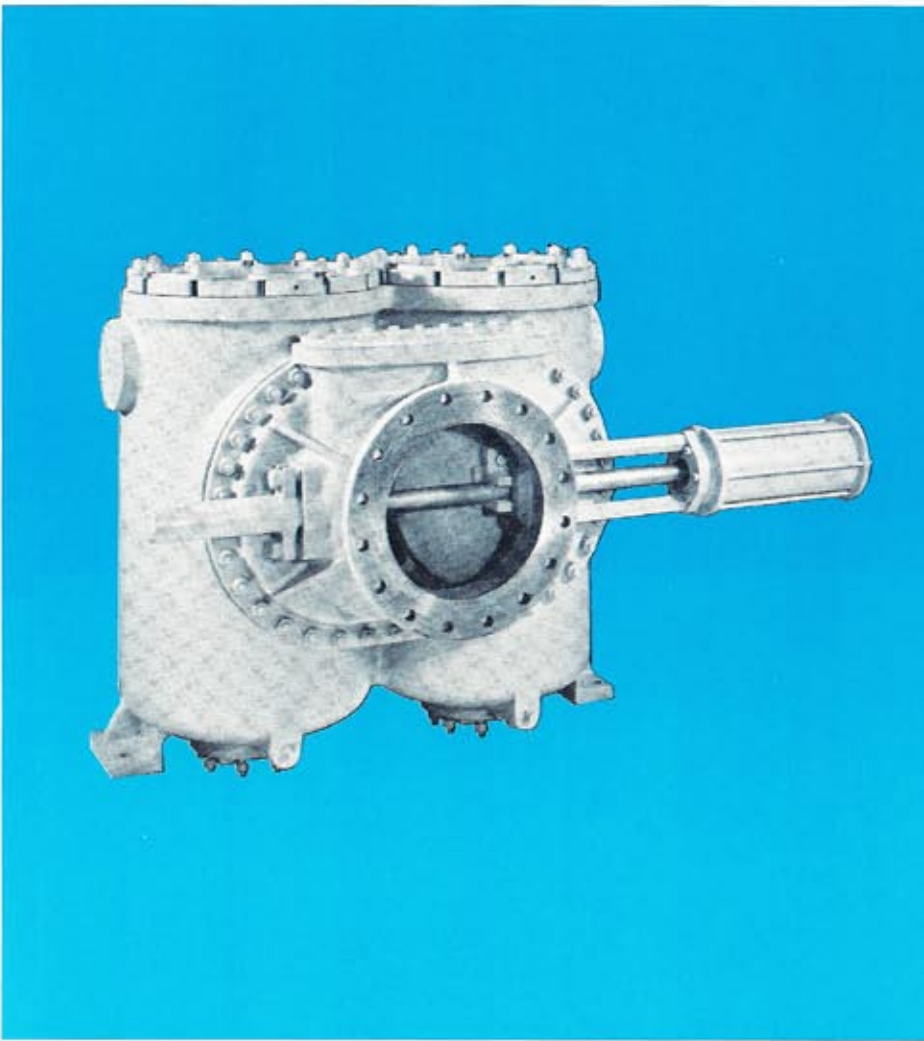


Tate Andale Model CC Self-Cleaning Strainer



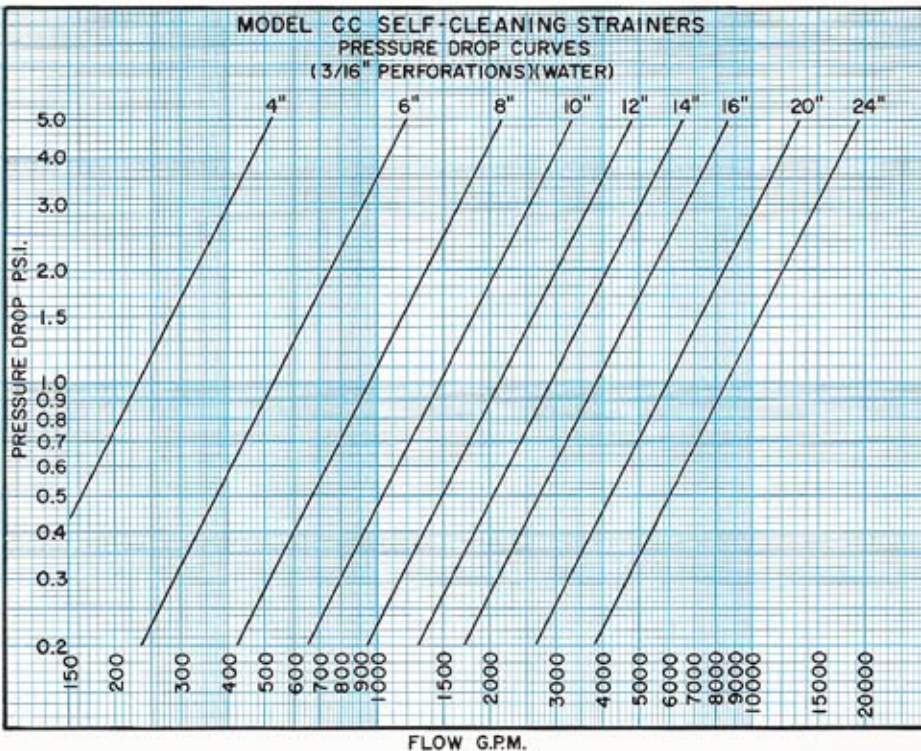
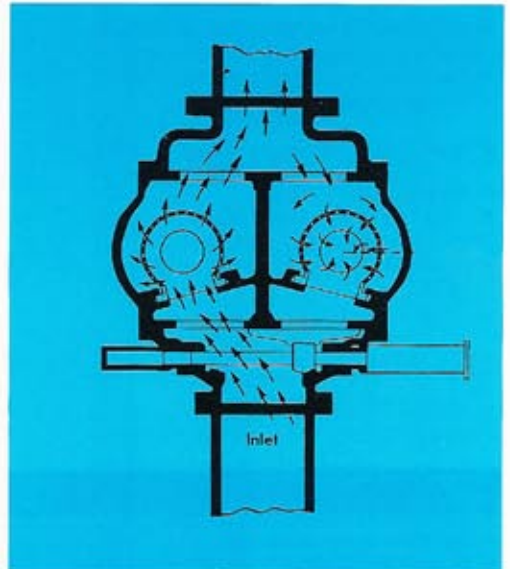
Description

The Tate Andale Model CC strainer is a simplified, efficient, automatic self-cleaning unit. It is a modification of the Model AL & AH design.

The Model CC is available in 4" thru 24" sizes and may be used for operating pressures from 15 to 125 PSIG.

The strainer body consists of two chambers with open bottom baskets to allow discharge of debris through a flushing drain.

An air cylinder positions the diverter valve, blocking the flow to the basket to be cleaned, upon a preset pressure drop. At the same time it puts the clean basket into service. Clean backflushing fluid is obtained from the discharge side of the basket. Diverter and drain valves are controlled sequentially to initiate backflushing.



Typical Strainer Specification

The strainer shall be a self-cleaning type, capable of handling _____ (fluid) at a flow rate of _____ GPM with an approximate pressure drop (clean) of _____ PSIG. The strainer shall be Model CC as manufactured by Tate Andale, Inc. and suitable to a working pressure of _____ PSI and a working temperature of _____ °F.

The strainer body shall be of cast iron construction with _____" flanged inlet and outlet connections and shall have bolted steel plate covers.

The strainer shall include a diverter gate valve with rubber valve rings which is operated by a pneumatic cylinder. This valve shall effectively divert the flow to one of the straining elements.

The element which is not subjected to the direct flow shall use a portion of the system flow to backflush contaminant.

Each basket chamber shall have a drain connection which shall be used for connection of backflush piping.

The two strainer baskets shall be of 304 stainless steel construction with ___ inch diameter perforated openings in a side-entry design to minimize pressure drop.

Standard Materials

Body..... Cast Iron
 Access covers..... Steel plate
 Valve shaft..... Bronze
 Diverter valve disc..... Cast Iron
 Valve rings..... Natural rubber stock
 Baskets..... 304 Stainless Steel

Standard Features

- Positive external valve position indicator
- Replaceable valve stem packing
- Right or left hand assembly
- All wearing parts replaceable without removing strainer from line
- External source of backflushing water not required

Optional Features

- Well screen baskets
- Zinc anodes for salt water
- Valve rings of bronze or steel
- Baskets of 316 Stainless Steel or Monel
- Higher design pressures

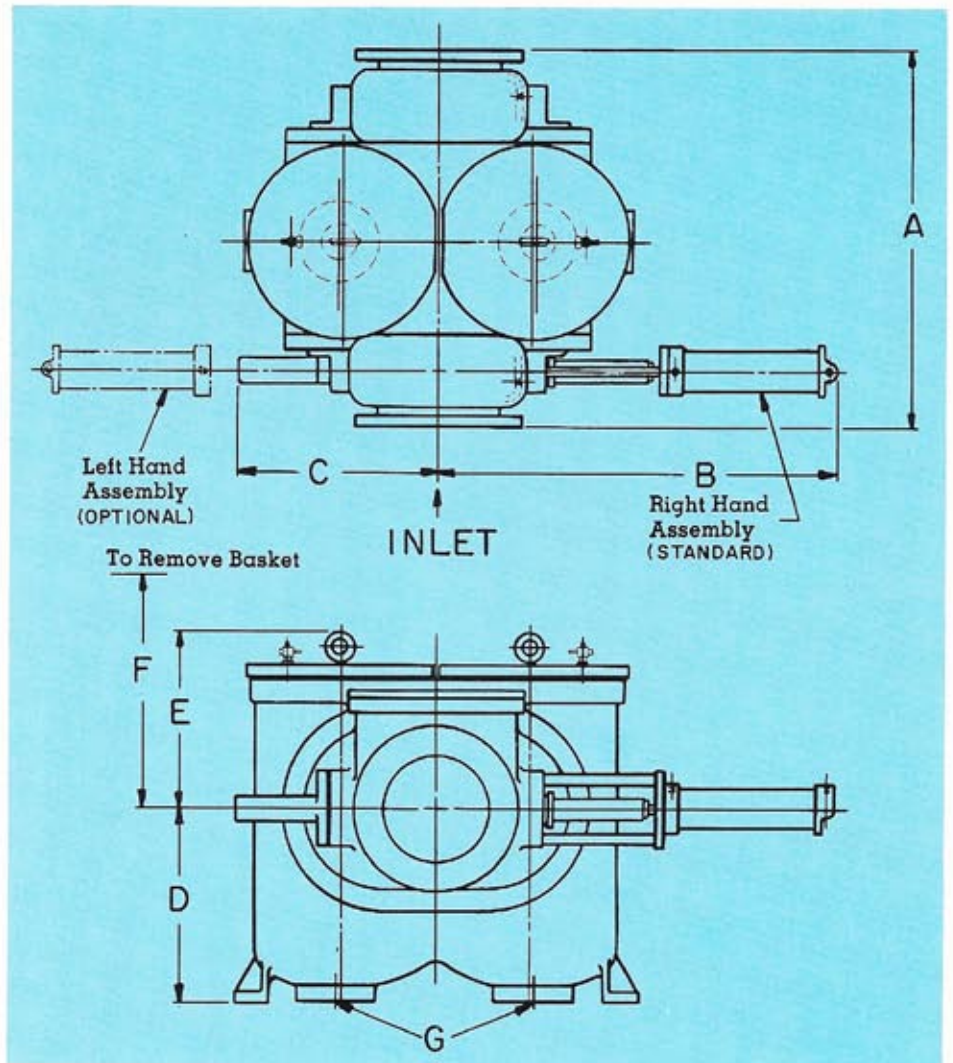
CC Automatic Control System

(see page A4-8 for additional data)

- Control panel with cycle timers
- Pushbutton over-ride control
- Differential pressure switch
- Air flow control valves
- Four-way solenoid air control valves
- Air-operated flushing valves (60 to 100 PSIG air required)
- Backflushing cycle time quickly and easily adjustable

Control Options

- Control transformer
- Recycle timer
- Sequential controls for multiple units
- Pilot lights
- Additional differential pressure switch for warning alarm signal
- Hydraulic-operated actuators
- Electric motor-operated flushing valves
- All electric operation



Model CC Dimensions (Approx.) 125 PSIG

SIZE (Inlet Dia.)	4"	6"	8"	10"	12"	14"	16"	20"	24"
A	24 ¹ / ₈	29 ⁵ / ₈	34 ¹ / ₈	37 ⁷ / ₈	43 ¹ / ₂	47 ¹ / ₈	51	66	75 ¹ / ₂
B	19 ³ / ₄	24 ⁵ / ₈	31 ¹ / ₂	35 ¹ / ₂	40 ⁵ / ₈	45 ¹ / ₂	49 ⁷ / ₈	60 ¹ / ₂	69 ¹ / ₈
C	10 ³ / ₈	13 ¹ / ₈	16 ³ / ₄	19 ¹ / ₄	22 ⁵ / ₈	25 ¹ / ₄	27 ⁷ / ₈	35	40 ¹ / ₄
D	9 ¹ / ₄	12 ⁷ / ₈	16 ³ / ₄	18 ³ / ₈	21 ³ / ₄	24 ¹ / ₂	26 ⁷ / ₈	34	38 ³ / ₄
E	9	12	14	15 ¹ / ₂	18	20 ³ / ₄	24	29	34
F	21 ³ / ₄	29 ¹ / ₂	37	43	51	57	66	76	94
G	2	2	4	4	6	6	6	8	8
Weight (lbs.)	400	900	1500	2300	3300	3800	5000	8600	13000